

Fluxo Dual-Jet Ventura Hand Dryer
Code: **HDJ 1VX**

Operation: automatic sensor does not require contact with your hands.

Materials: plastic ABS silver painted case and high quality polycarbonate board.

Technical Specifications: Equipped with reliable brushless motor, LCD display with timer, filter air and water collection tray.

Drying time: 10 sec.

Total rated power: 1.650-2.050 W

Motor: 750 W

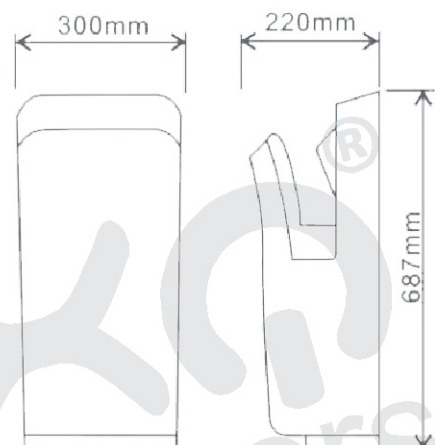
Voltage: 220-240 V

Safety class: IPX4

Noise level: 76 dBA

Airspeed: 95 m/s

Dimensions: 30 x 22 x 69 cm



Installation and setup: The board is fixed to the wall with 6 screws with anchors (included in delivery), and the case is mounted on the board with screws. Laying dryer wall is made using sketch included.

Attention! Should be fitted at a height of 22 cm above the ground.

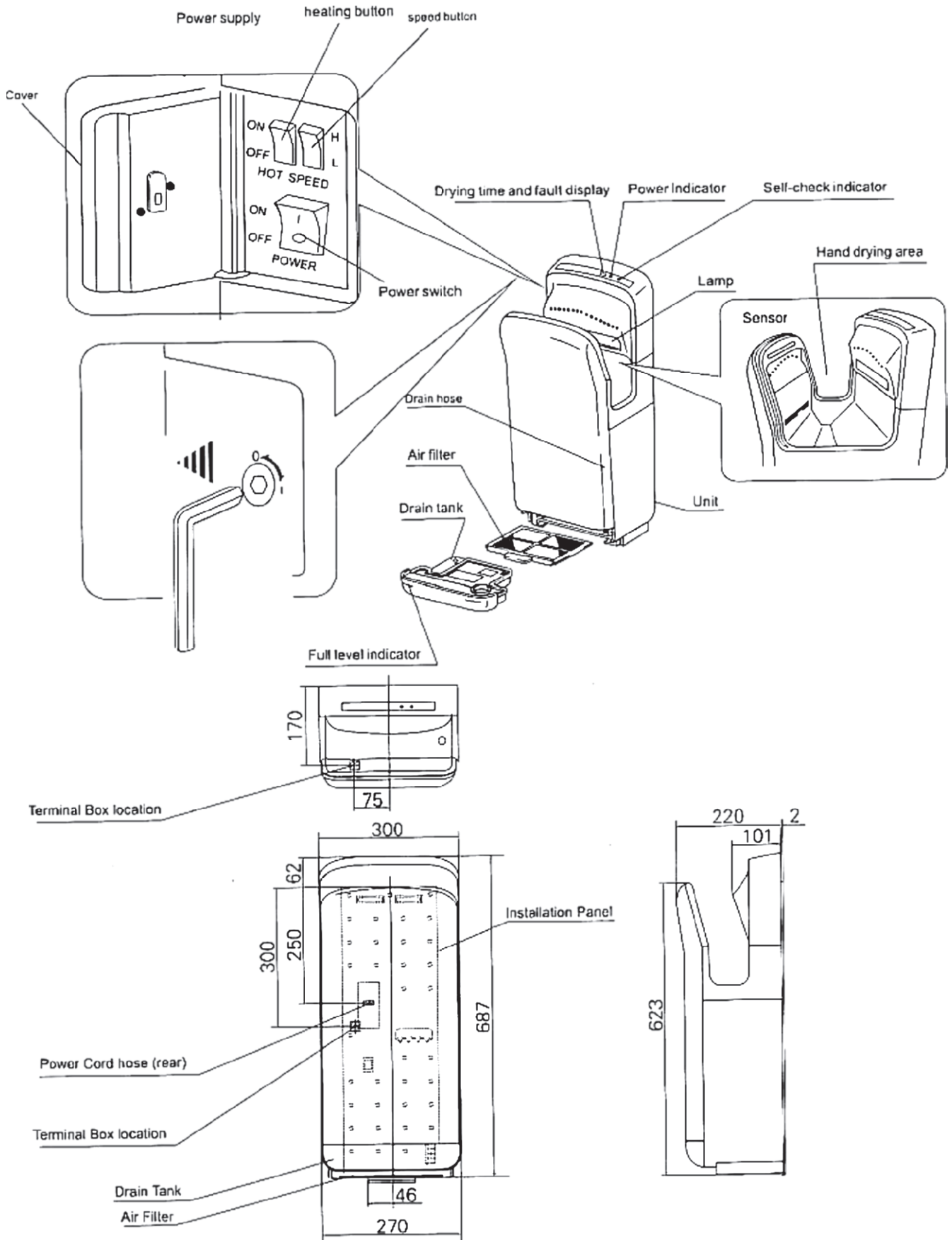
Product manufactured in accordance with quality, safety and environmental protection of the EC.

CE certification approved.

Fluxo is a registered trade mark of Higiene Lacroix - Romania. Higiene Lacroix reserves the right to make changes and/or modifications to the products and their specifications without prior notice.



FLUXO[®] dryers



FLUXO[®] dryers

