

# Floor access cover system PRO+

Aluminium

ProfessionalLine+

**NEW**

**Product description:**

The floor access cover system PRO+ is made of 2.5 mm aluminium. The tray depth is 65 mm and the structural height amounts to 75 mm only. The frame is equipped with a circumferential, frost- and weather-resistant special sealing joint, which is largely odor- and water-tight. The frame is set in concrete on grade. Subsequently, the tray can be filled and inserted into the frame. The cover is fixed on the frame on the 4 corner points. The cover can be lifted out on these points with the lifting key. The tray can be filled with paving, tiles, concrete, artificial resin, granite, terrazzo tiles, wood and hard floor covering or other materials.

**Load:**

- Up to 125 kN testing force according to EN 124 (class B125)

**Material:**

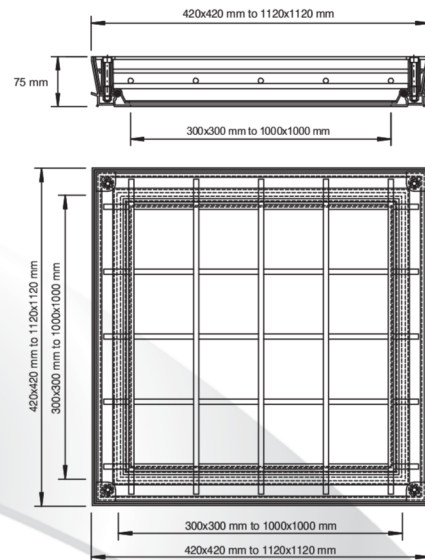
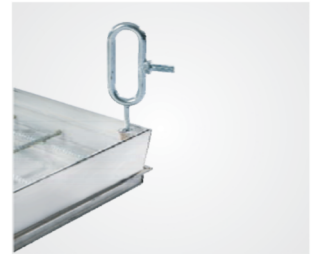
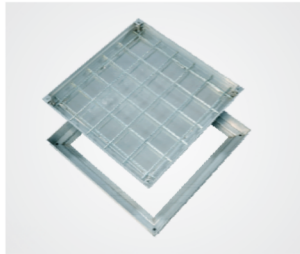
- Frame and tray made of 2.5 mm aluminium

**Areas of use:**

For on grade manholes in indoor and outdoor areas



System PRO+



Item no.	Overall frame size	Clear opening
PRO+300300AL75	420 x 420 mm	300 x 300 mm
PRO+400400AL75	520 x 520 mm	400 x 400 mm
PRO+500500AL75	620 x 620 mm	500 x 500 mm
PRO+600600AL75	720 x 720 mm	600 x 600 mm
PRO+700700AL75	820 x 820 mm	700 x 700 mm
PRO+800800AL75	920 x 920 mm	800 x 800 mm
PRO+10001000AL75	1120 x 1120 mm	1000 x 1000 mm

**Opening:** A lifting key and installation instructions are included with every FF floor access cover.

**Installation:**

The installation shall be implemented in a professional manner in accordance with our installation instructions. With types with special sealing joint, a tight connection to the frame profile is to be ensured.

**Special benefits of our system**

- With frost- and weather-resistant special sealing joint
- Almost invisible in the installed state
- The tray depth amounts to 65 mm
- With additional reinforcement cross-braces
- Can be easily opened due to the conic construction method

**FF Systembau**  
Access Covers